

SCUDO



SCUDO RANGE:

- Long wheelbase van

STANDARD FEATURES:

- Standard Features:
- 6m³ cargo volume
- 1.2 ton payload
- Glazed rear barn doors with heated windows
- Dual sliding doors
- Manual air conditioning
- External rearview mirrors with electrical drive and defrost
- Cruise control
- Radio with CD/MP3
- Blue&Me with USB
- Driver airbag
- Electrically-operated front windows

OPTIONS:

- SUPPLEMENTARY FRONT bench SEAT WITH 3-POINT SEAT BELT and airbag
- Removable glass dividing wall
- Front seat mounted side airbags
- Vehicle Dynamic Control (VDC)
- Air suspension with adjustable load threshold.

EXTERIOR COLOURS:

Pastel colours.

194 Nizza Red



249 Banchisa White



601 Onyx Black (o)



455 Imperiale Blue (Optional)



479 Line Blue (Optional)



Metallic colours. (optional)

685 Alluminio Grey

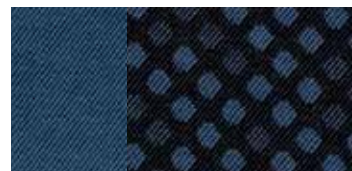


691 Ferro Grey



INTERIOR TRIM:

148 Pois Blue fabric



The colours shown on these pages are purely indicative. Type-setting inks cannot reproduce body colours faithfully.

Technical Specifications:

Engine	120 Multijet
Number of cylinders, layout	4, in line
Position	front, transverse
Diameter x stroke (mm)	85 x 88
Displacement (cc)	1997
Emissions level	Euro 4
Emission control	2 Oxidising catalytic converters + electric EGR valve, EOBD with particulate filter (DPF)
Compression ratio	17,5 : 1
EC max. power: kW (HP) at rpm	88 (120) 4000
EC max. torque: Nm at rpm	300 2000
Timing system (drive)	DOHC (toothed drive belt)
Fuel system	electronically controlled Common Rail MultiJet direct injection, variable geometry turbo and intercooler
No. of valves	16
Transmission	
Traction	front
Clutch	self-adjusting single disc and hydraulic release device
Gearbox: number of gears	6 + R
Steering system	
Type	rack and pinion with electrohydraulic steering-booster
Turning circle (kerb-to-kerb)	Short wheelbase m 12.2 - Long wheelbase m 12.6
Brakes - D (disc)	
Front: Ø (mm) (ventilated discs)	D 304
Rear: Ø mm	D 290
Suspension	
Front	independent, MacPherson type with lower wishbones and anti-roll bar
Rear	torsion beam with coil springs, Panhard bar and angled hydraulic shock absorbers
Wheels	
Rims	7 J 16"
Tyres	215 / 60 R 16
Performance	
Maximum speed (km/h)	170
Weights - Capacities	
Max. towable weight braked (kg)	1950
Fuel tank capacity (litres)	80